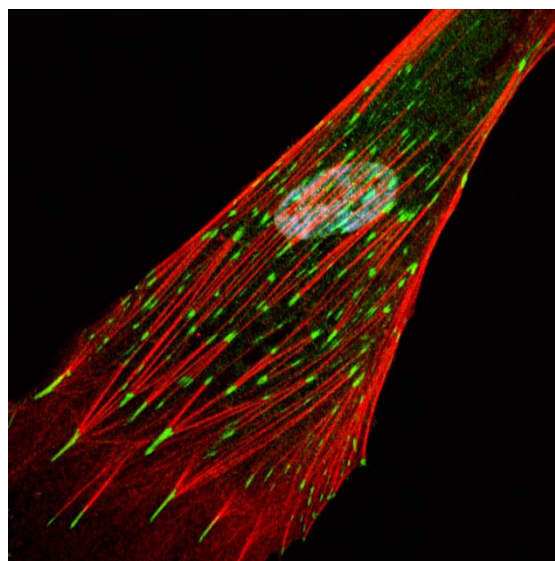


PRIMARY CELL AND ESTABLISHED CELL LINE MODELS

CELL CULTURE SYSTEMS – HUMAN AND RODENT

- Primary human and rodent cell/tissue culture from multiple organ systems
- Long-term normal and transformed cell line culture
- Dose-response testing in cells to define drug activity or toxicity
- Generation of cell culture supernatants for growth factors, proteins, and matrix components
- Development of client-specific cell culture models for drug screening



Immunofluorescent Staining of a Human Fibroblast

PHARMACEUTICAL APPLICATIONS

- Screening of compounds for activity or toxicity
- Defining human primary cell or cell line responses
- Supplementing of internal cell culture resources
- Mechanistic determinations of drug efficacy or toxicity
- Advanced cell culture approaches to mimic *in vivo* conditions
- Comparative testing of preclinical and clinical drug responses
- Cost-effective development new cell-based models

Our scientists have over 30 years of research experience, and extensive publication records, in cell biology and cell culture. We provide basic and sophisticated cell culture support to supplement a broad range of drug development needs.