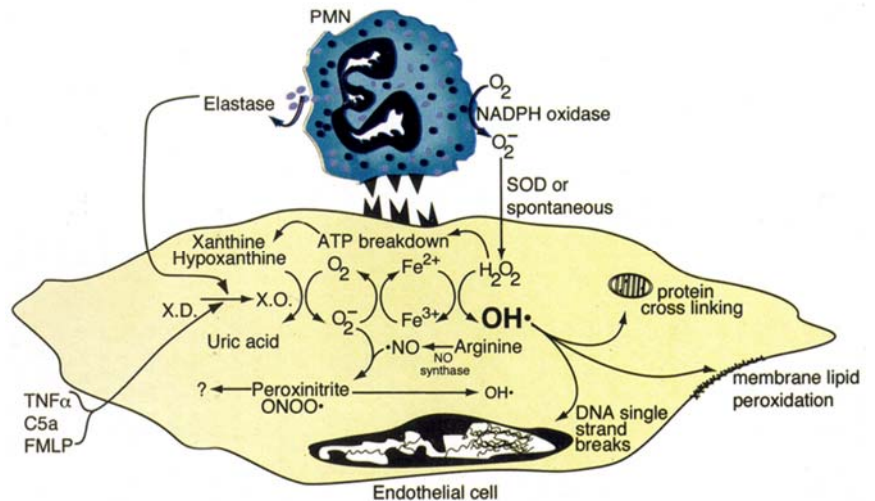


VASCULAR BIOLOGY AND ENDOTHELIAL CELL MODELS

SYSTEMS FOR ENDOTHELIAL BIOLOGY

- Acute and chronic vascular injury models
- Human primary endothelial cells and established cell lines
- Healthy volunteer, psoriatic, Rosacea, cancer, and fibrotic systems
- Cytokine, integrin, and cell-surface marker characterization of vessels or individual cells
- Rodent, bovine and porcine endothelial cells and tissues



Pathways to Vascular Damage in Acute Inflammation

PHARMACEUTICAL APPLICATIONS

- Direct and indirect drug-mediated injury
- Localized injection site responses
- Drug compatibility and irritation assessment
- Mechanistic determinations of vascular changes
- Apoptotic and anti-apoptotic mechanisms
- Assessment of angiogenic and anti-angiogenic activity
- Drug-induced vascular toxicity