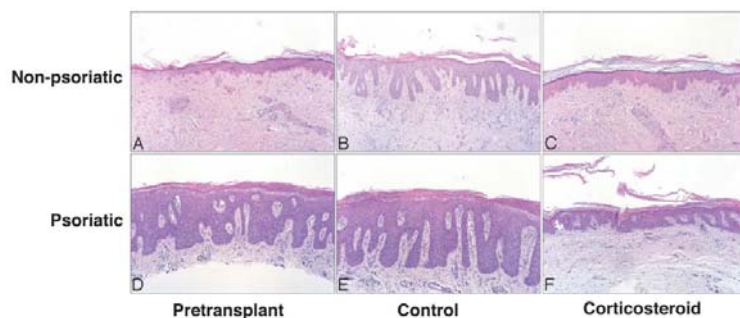


HUMAN PSORIATIC SKIN – SCID MOUSE TRANSPLANT MODEL

- The human psoriatic skin – scid mouse transplant model is the industry accepted model for preclinical assessment of potential anti-psoriatic agents.
- JV BIOLABS has over 10 years of experience with this model.
- Can assess clinical changes, histology features and immunohistology. Changes in growth factor / cytokine production with treatment.
- Topical, systemic and oral dosing is possible.
- Transplantation model can be used alone for demonstration of therapeutic efficacy.
- Transplantation model can be used in conjunction with human skin organ culture and keratinocyte culture to assess mechanisms of action.
- Contact JV Biolabs for discussion or to receive relevant publications.



Above: Scid mice after human psoriatic skin transplantation and healing;
Left: Histological features of transplanted psoriatic skin following treatment for 14 days with vehicle alone or with therapeutic agents

