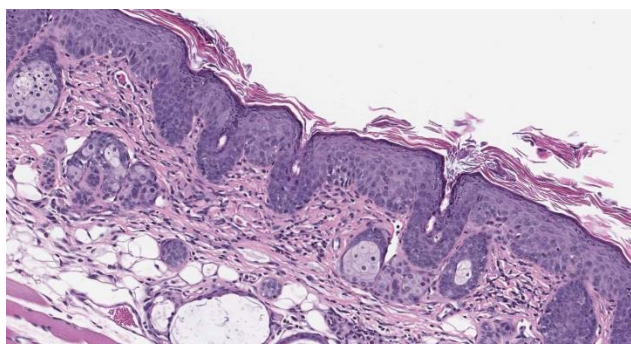
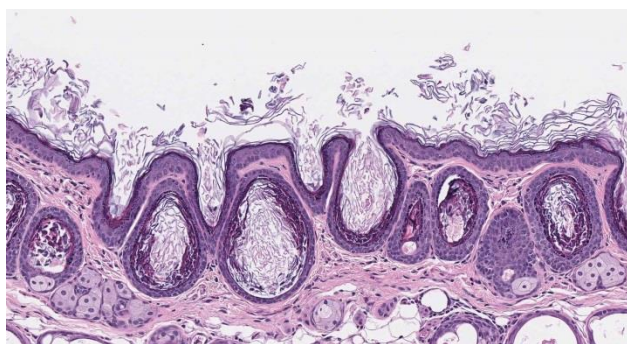


## RHINOMOUSE MODEL

### THE RHINOMOUSE MODEL IS THE INDUSTRY ACCEPTED MODEL FOR PRECLINICAL ASSESSMENT OF RETINOIDS FOR ANTI-ACNE ACTIVITY

- JV Biolabs has over 15 years of experience with this model
- Assess efficacy (anti-keratinization), inflammation, skin irritation, systemic toxicity in same experiment
- Topical, systemic and oral dosing possible
- Native molecules and formulated products can be employed
- Can be used alone for demonstration of therapeutic efficacy
- Can be used in conjunction with human skin organ culture and keratinocyte culture to assess mechanisms of action
- Non-retinoids compounds can also be evaluated in the rhinomouse model



*Histological features of rhinomouse skin after treatment for 21 consecutive days with a control vehicle alone (left panel) or with a biologically active retinoid (right panel). In the control section, the epidermis is thin and horn-filled utriculi are numerous. In the retinoid-treated skin, epidermal thickening is seen. There is a loss of horn-filled utriculi. Inflammatory cells are seen throughout the dermis.*

Contact JV Biolabs for discussion, to receive relevant publications or price quote.