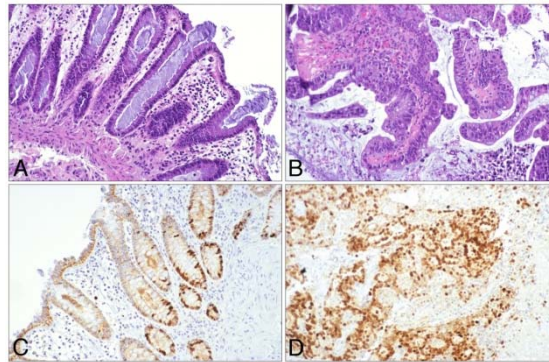


TUMOR BIOLOGY

FULL RANGE OF MODEL SYSTEMS OR STUDY OF TUMOR CELL BIOLOGY

- Human tissue – normal, premalignant and malignant in culture
- Xenograft models
- Rodent tumor models for primary tumor and metastatic growth
- 2D and 3D cell culture



Normal and malignant human colon tissue in organ culture provides a model for preclinical investigation and drug development. In the normal tissue (left), proliferation (brown stain) is confined to the base of the crypt. In tumor tissue, there is widespread proliferation.

PHARMACEUTICAL APPLICATIONS

- Preclinical assessment of therapeutic efficacy in cell culture models and in ex vivo human tissue models
- Dietary / therapeutic intervention in long-term rodent models
- Mechanisms of action with small molecule inhibitors and Mabs
- Models for carcinogenesis and anti-carcinogenesis
- Biomarker detection and modulation

Scientists at JV Biolabs have over 30 years of research experience in tumor cell biology / patho-biology. We can support your drug development efforts in tumor biology.