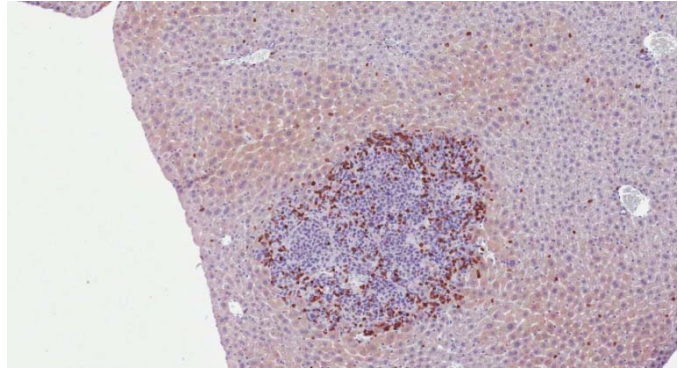


## TUMOR IMMUNOLOGY

### FULL RANGE OF MODELS FOR STUDY OF TUMOR IMMUNOLOGY

- Human tumors in xenograft models
- Rodent tumors in syngeneic host
- Carcinogenesis / anti-carcinogenesis models
- 2D and 3D cell culture



*T cells surround murine tumor but most at periphery*

### PHARMACEUTICAL APPLICATIONS

- Preclinical assessment in support of Mab and vaccine development programs
- Detection and quantification of target molecules on tumor cells and normal counterparts by confocal immunofluorescence microscopy, flow cytometry, immunohistology, ELISA and western blotting
- Assessment of efficacy with monoclonal antibodies, peptides and immune modulators in cell culture models, in syngeneic rodent models and in human xenograft models
- Studies to assess mechanisms of action
- Target molecule modulation

**Scientists at JV Biolabs have over 30 years of research experience in tumor immunology. We can support your drug development efforts in tumor immunology.**